


Sage PFW ERP 2010

Release Guide





As you read through this Release Guide, we hope you will be excited by the many new enhancements available in Sage PFW 2010. You may be wondering how you can get access to all of these new features. Great news! Customers on a current Sage PFW ClientCare Plan automatically receive access to software upgrades and maintenance updates every time one is released, along with many other features, including:

- **Unlimited Toll-Free Telephone Support.**

You can also submit cases by e-mail or online at: www.sagesoftwareonline.com

- **Access to Sage Online.** This Web-based technical resource, available 24/7, provides product fixes, support documents, troubleshooting templates, and year-end tips, as well as technical bulletins for Sage PFW.


- **Option to Acquire New Modules.** Sage offers a broad selection of add-on modules to meet the changing needs of your business.

- **Realtime Learning Courses.** Keep up with the latest Sage technology and services as well as insight into various functional areas across your business through online Learning Courses.

- **Private Tutor.** These personalized, interactive online training sessions are created expressly for your company. One of our specialists will design a one hour curriculum to meet your specific training requirements.

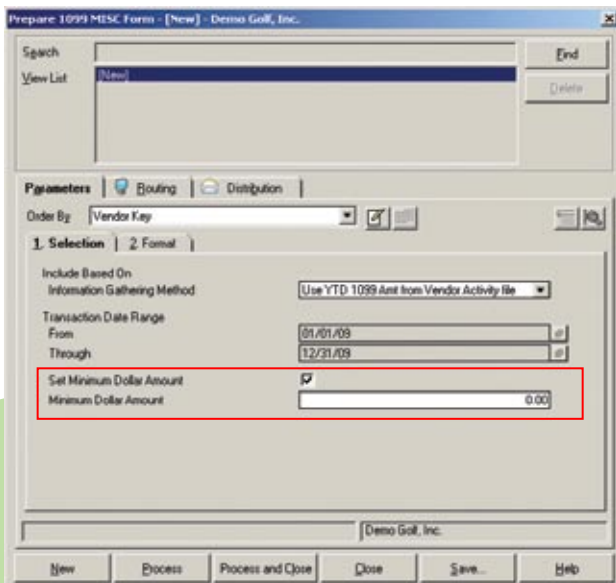
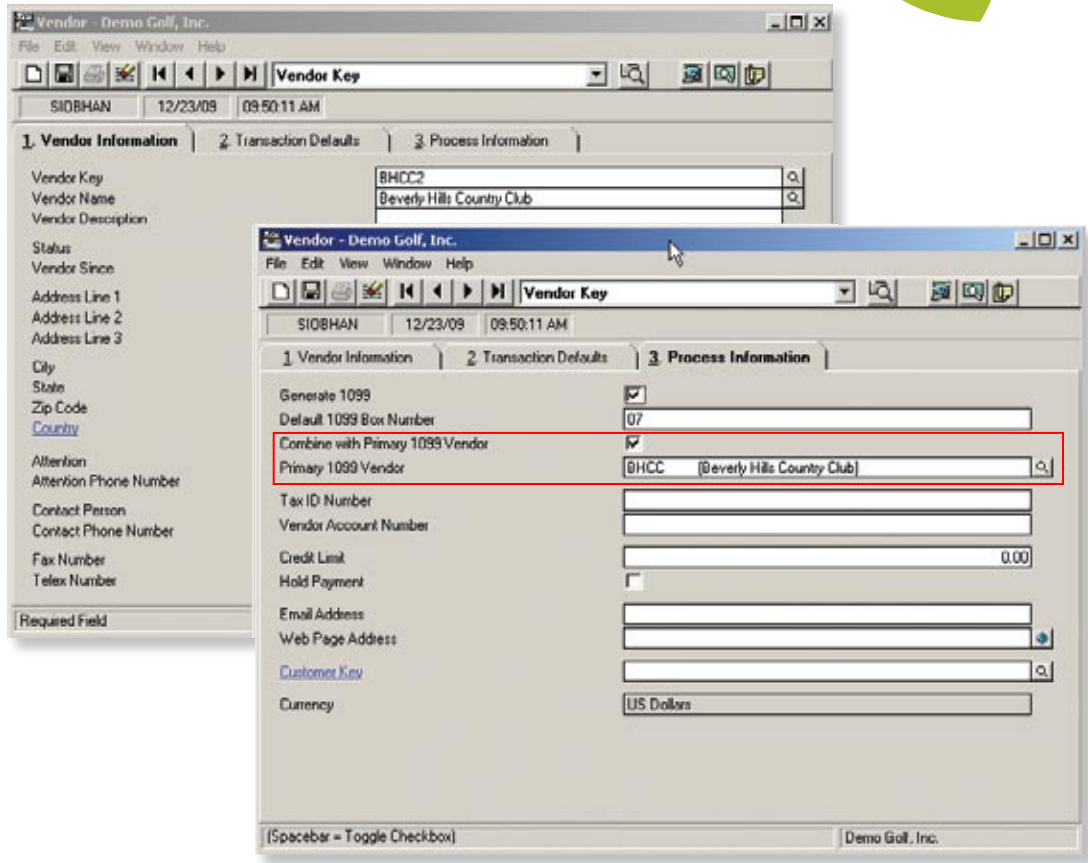
If your Sage PFW ClientCare plan has lapsed, you don't have to miss out. [Simply contact us at 800-854-3415 today.](tel:800-854-3415)

Now read on to learn about all the exciting enhancements available in Sage PFW 2010!



Customize your 1099 printing options for a wide variety of vendors

Do you have vendors with multiple ship-to addresses, but are required to roll up the 1099 reporting to the parent company? With the new Consolidated 1099 Reporting feature in Sage PFW 2010, you can generate and print a single 1099 for vendors with multiple locations and/or subsidiaries while maintaining the separate vendor records you need.



The latest version of Sage PFW also allows you to generate and print 1099 forms for all user-selected vendors, regardless of the dollar amount spent. You can even specify a minimum value that will trigger the 1099 generation.



Save time and reduce errors by easily autopopulating the Return Entry screen

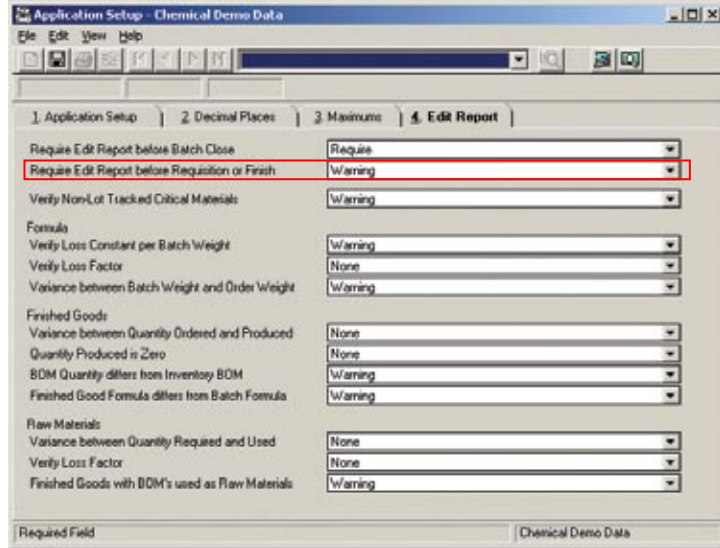
Manually entering invoice data into the Return Entry screen creates the risk of errors. A new Find Historical button has been added to the Return Entry screen to help you easily populate the screen with all of the information from the original invoice. Simply select the invoice to be returned and edit the information as necessary.

Reduce confusion and stay compliant by selecting whether freight in Sales Order and Shipment Entry is taxable or not taxable

Since freight is taxable in many U.S. states and Canada, many Sage PFW customers needed an easier way to enter the tax without having to go back to the original sales order. New in Sage PFW 2010, the Sales Order Entry screen and Shipment Entry screen now offer the option for freight entered on the main screen to be either taxable or not taxable, and since you can assign the appropriate tax key to the freight, you can save time and confusion.

Save time and resources with the new Batch Warning System

Reversing a batch requisitioned, finished, or closed in error can be time consuming and costly. Now you can protect your batches by using the new Batch Warning System, designed to stop or warn you when a batch does not meet one or more of your defined criteria. You can decide if a user should stop or be warned when requisitioning, finishing or closing a batch.



Aged Inventory Report

by Item Class Key / Location Key
Your Company Name

Item Class	Description	Item Key	Loc Key	Status	Qty On-Hand	Unit Cost	0 - 90	91 - 180	181 - 270	Over 270
BMCCN Process Containers										
		FIVE GAL	CHLOC	Active	47,000	2.000	0.000	0.000	0.000	47,000
		REDOXPRM_ABCDEFGHJKLMNOQ--S	RMLOC	Active	450,000	0.305	0.000	0.000	0.000	450,000
		REDOXPRM	RMLOC	Active	450,000	0.305	0.000	0.000	0.000	450,000
		ZOLOVER	CHLOC	Active	10,000	0.000	0.000	0.000	0.000	10,000
		ZINDEX	RMLOC	Active	9,000	0.000	0.000	0.000	0.000	9,000
		ZPALM	RMLOC	Active	9,000	0.000	0.000	0.000	0.000	9,000
		ZPINCY	RMLOC	Active	9,000	0.000	0.000	0.000	0.000	9,000
		ZPONTER	RMLOC	Active	9,000	0.000	0.000	0.000	0.000	9,000
		ZRING	RMLOC	Active	9,000	0.000	0.000	0.000	0.000	9,000
		ZTHUMB	RMLOC	Active	9,000	0.000	0.000	0.000	0.000	9,000
Item Totals:					1,611,000	368,077	0.000	0.000	0.000	1,611,000
BMFG Process Finished Goods										
		APR-FLAVOR-OMEGAL	FGLOC	Active	72,000	7.000	0.000	0.000	0.000	72,000
		REDOXPRM_55 GAL_ABCDEFGH--S	SLBCH	Active	6,000	0.000	0.000	0.000	0.000	6,000
		REDOXPRM_55 GAL	FGLOC	Active	14,000	1,000.000	0.000	0.000	0.000	10,970,000
		REDOXPRM_55 GAL	SLBCH	Active	6,000	0.000	0.000	0.000	0.000	6,000
		REDOXPRM_FIVE GAL	FGLOC	Active	11,400	100.000	0.000	0.000	0.000	11,400
Item Totals:					109,400	10,644,000	0.000	0.000	0.000	11,065,400
BMRM Process Raw Materials										
		24LEADN	DALE	Active	13,000	1.000	0.000	0.000	0.000	13,000
		ALUMSTER_ABCDEFGHJKLMNOQ--S	SLBCH	Active	97,356	1.000	0.000	0.000	0.000	97,356

Created : 11/13/2009 5:26:42PM Page: 1

Easily see the age of inventory in your warehouse

It can be difficult to determine the age of inventory sitting in the warehouse. The new Inventory Aging Report can help you make better inventory decisions by showing you at a glance how long inventory items have been sitting. Now you can see the age of the inventory by location, class and item based on user-defined aging periods.



Purge Transaction History - [New] - Chemical Demo Data

Search Find

View List Delete

Parameters Routing Distribution

Order By:

1. Transaction Filter

Item Key Range
From

Through

Location Key Range
From

Through

Include Based On
Transaction Type

Through Period End Date

Action
Generate Method

Chemical Demo Data

New Process Process and Close Close Save... Help

Run your Inventory period-end processing more smoothly with a GAAP-compliant method of purging files

Does your Inventory period-end processing and report generation take longer each month? It could be that your Inventory Pro files are exceeding the 2GB limit for Pervasive. Take advantage of the new Inventory Transaction File Purge Utility, which purges the oldest data first—transactions older than one year (or more, based on how you set the parameters), not attached to open transactions or open cost layers. Your reports and period-end processing will go more quickly, and allow updates to be installed and converted without the need to purge transactions manually.

New! 64-bit server compatibility and other enhancements

Ideal for users who have upgraded to 64-bit server operating systems such as Windows Server 2008, Sage PFW 2010 will install and run in a 64-bit server environment, so you can take advantage of added memory, speed, and performance improvements. Additional enhancements to Sage PFW 2010 include the upgrade of Sage PFW Help to utilize HTML Help, which is native to Windows Vista® and Windows 7, and a Pervasive security upgrade. An interface was implemented to lock down the Pervasive database tables without losing access to other areas of the Sage PFW product.



Ready for Sage PFW 2010?

If you're on a current Sage PFW ClientCare plan, you will receive the upgrade as just one of the many benefits of being a Sage PFW ClientCare member. Not currently on a plan? We're here to help—simply contact your Sage PFW Partner, e-mail SagePFWinfo@sage.com, or call the Sage team at 800-854-3415.

Get Connected!

Visit the Sage PFW online community today to ask questions of and share product experiences, tips, tricks, and suggestions with colleagues as well as industry and product experts.

Community.SagePFW.com

Sage | 800-854-3415 | 56 Technology Drive | Irvine, CA 92618 | www.SagePFW.com

©2010 Sage Software, Inc. All rights reserved. Sage, the Sage logos, and the Sage product and service names mentioned herein are registered trademarks or trademarks of Sage Software, Inc., or its affiliated entities. Windows Vista and the Windows Vista logo are trademarks or registered trademarks of Microsoft Corporation in the United States and/or other countries. All other trademarks are the property of their respective owners.

03/10 10-22924



sage