



# Sage PFW ERP

## Inventory

Sage PFW Inventory is designed with maximum flexibility to meet the varied needs of today's inventory managers. Accurate and efficient inventory management is essential for smooth and profitable business operations. Inventory streamlines processes and puts you in control with easy access to detailed inventory records and customized keys so you can analyze data any way you want. Quickly identify which merchandise to market and stock or discontinue. Your sales personnel will have the ability to respond immediately and accurately during customer inquiries concerning what items are currently in stock and their price points. Designed with extensive customization abilities, Inventory is easily tailored to your specifications for maximum functionality and efficiency. Most importantly, Inventory empowers you to analyze trends for those big-picture insights that help you to boost your bottom line and plan more effectively for your company's future.

From developing innovative products that anticipate customers' changing needs to providing award-winning customer support, Sage is dedicated to surpassing expectations in all aspects of your business. Rest assured Sage PFW is supported by a nationwide network of specialists who are your resource for implementation, training, service, and support.

### CUSTOMIZATION

Sage PFW ERP is easily customized, not only within Inventory, but also throughout the solution to fit the widely varying needs of today's businesses.

### ACCESS TO BUSINESS-CRITICAL INFORMATION

Empower your staff with vital information when they need it! Universal Notes and Attachments put critical information at your fingertips, improving customer satisfaction and increasing productivity.

### STREAMLINED INTEGRATION

Seamless integration with other Sage PFW modules eliminates redundant data entry and automates your workflow, creating a fully integrated solution.

### LEVERAGE PRICING PROMOTIONS

Effectively analyze your inventory for stock levels and product trends to plan special pricing promotions, maximizing your returns.

### POWERFUL INVENTORY PROCESSING

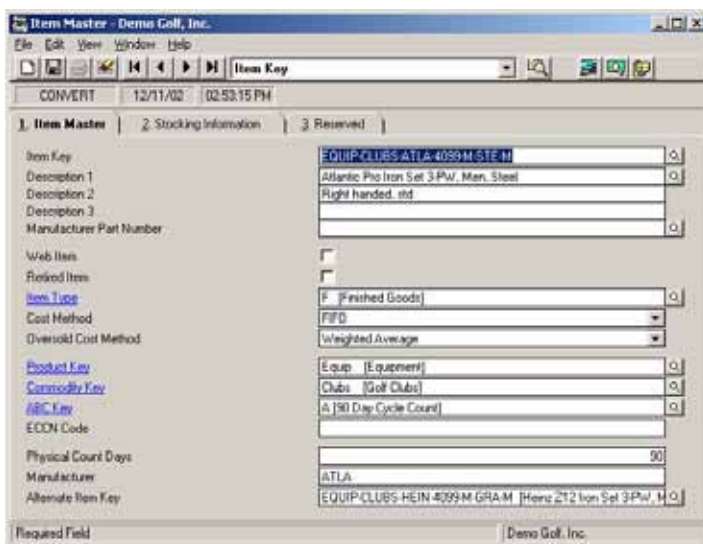
Take control of inventory management with Sage PFW. Improve customer satisfaction by delivering more products on time and maximize profitability by optimizing your stock levels.

### AUTOMATIC PURCHASING

Eliminate costly manual errors and stay on top of your inventory levels by automating your purchasing process.

### INSIGHTFUL REPORTS

Sage PFW transforms your data into the insights you need to manage your business more effectively.



**Customization**

The Inventory module can be easily customized to your business processes for maximum functionality and efficiency, ensuring consistent system use and reducing training requirements. Unique customization templates enable you to remove, rename, require or prevent entry, and set minimum/maximum numeric ranges for any entry field. Additionally, you can hide screen tabs that are not required in your business and even create your own field-level help. These are just a few of the possibilities that can set productivity soaring throughout your organization.

**Access to Business-Critical Information**

Effectively up-sell and cross-sell inventory, increasing both the value and volume of sales by linking relevant sales information, product specifications, and visual images to each item for quick and easy access by your salespeople. Use pop-up notes to alert employees on discontinued, obsolete, and deactivated inventory items. Universal Notes and Attachments functionality provides your sales staff insight into your inventory and much more. Since this functionality is available throughout Sage PFW, the possibilities are virtually unlimited.

**Streamlined Integration**

As a fully integrated solution, Inventory provides Accounts Receivable, Accounts Payable, Purchase Order, Sales Order, and Project Cost users with a complete view of inventory item status, including on-hand, committed to sales, and committed to production quantities. You can tie your inventory items to preferred vendors, sales tax keys, and general ledger accounts. With the addition of the Sage PFW Project Costing module, you can even track project costs at the line item level on all transactions.

**Leverage Pricing Promotions**

Pricing promotions allow you to market effectively the products you want to move through inventory to maximize your profitability. Sage PFW reporting gives you the insight you need to determine what products you should promote. Additionally, integration with the Accounts Receivable module offers powerful pricing functionality that allows you to offer volume discounts, price specials and commission incentives, and discounts for specific inventory items, locations, and customers, as well as for selected date ranges. Additionally, percent or dollar volume discounts can be set up for selected customers and customer classifications, items, and inventory classifications.

**Powerful Inventory Processing**

Organize inventory records quickly and easily using the versatile alphanumeric item key and reportable item class, product, commodity, and manufacturer information fields. Sage PFW allows unlimited warehouse locations and tracks pricing, cost, stock, and order information for each item and location. You can automatically monitor inventory status for each item and location, such as available for sale, not in stock, overstocked, oversold, on hand, on order, committed to sale/production, and transferred to or from locations. Powerful processing features include immediate data validation using visual red-flag alerts, unlimited transactions, serial/lot tracking, access to historical data, and an easy-to-use physical count process that supports cycle counting. Designed with the flexibility to meet the needs of today's diverse business environments, Inventory supports LIFO, FIFO, Weighted Average, and Standard cost as specified on an item-by-item basis. Transactions are recorded and processed at the individual level, making costing clearer. Processing transactions automatically updates costing and inventory quantities for accurate costing and stock levels.

**Automatic Purchasing**

Streamline your purchasing process by automatically creating purchase orders to replenish your stock levels. This robust feature calculates replenishment quantities based on your specifications, including inventory availability, minimum/maximum stock, reorder points, and more. Recommended purchase orders will be generated in the Sage PFW Purchase Order module and can be reviewed and edited prior to release.

**Insightful Reporting**

You can easily monitor the activity, status, valuation, and month-to-month sales history of any inventory item including carrying costs past demand and seasonal fluctuations. Extensive reporting capabilities provide the insights you need to optimize stock levels and avoid over- and under-stocking dilemmas. Profit analysis of each item using any costing method and a month-by-month comparison of past pricing and sales equip you with the big-picture insights of which items to carry and which to discontinue.