



Sage PFW ERP

Purchasing Pro

Purchasing practices can make the difference between surviving and thriving in the competitive process manufacturing industry. Sage PFW ERP Purchasing Pro provides comprehensive, highly flexible tools for strategic planning and handling of crucial tasks. Powerful and precise capabilities help you efficiently manage your purchasing processes, allowing you to lower costs, expedite deliveries, enhance vendor relationships, and improve your customer satisfaction when products are delivered on time.

Capitalize on quick, error-free ordering, streamlined receipt processing, and a number of versatile tools that help you manage late deliveries, back orders, partial shipments, and duplicate orders. Add on the fully integrated MRP module for a powerful tool that streamlines your purchasing process by automatically creating purchase orders to meet inventory demands. This robust feature calculates replenishment quantities based on your specifications, including time-phased analysis of sales orders, production orders, current inventory levels, forecasts, and more. Generated or manually entered purchase orders can be reviewed and edited prior to release, giving you the ability to control and track goods received and automatically create entries to recognize both normal and accrued receipts. Most importantly, Sage PFW empowers you with the purchasing insight required to help boost your bottom line and plan more effectively for your company's future.

Sage PFW is developed to meet the needs of your business, providing fast, dependable, customizable purchasing management and data security. Unlike the majority of manufacturing software, Sage PFW is the only software of its kind that was developed specifically to address the unique challenges of process manufacturing. Its complete solution of powerful financial and process manufacturing modules provides specifically targeted capabilities to boost production, maximize profits, and increase efficiency in your supply chain.

CUSTOMIZATION

Maximize efficiency and productivity with customizable features that empower you to tailor your system to meet your company's specific and changing needs.

MULTICURRENCY CAPABILITIES

Extensive multicurrency capabilities, including instant conversion of foreign currencies to home currency and vice versa, give you the competitive edge to succeed in the global marketplace.

ACCESS TO BUSINESS-CRITICAL INFORMATION

Empower your staff with vital information when they need it! Sage PFW puts critical information at your fingertips, improving customer satisfaction and increasing productivity.

STREAMLINED INTEGRATION

Seamless integration eliminates redundant data entry and automates your workflow, creating a fully integrated purchasing system.

POWERFUL FLEXIBILITY

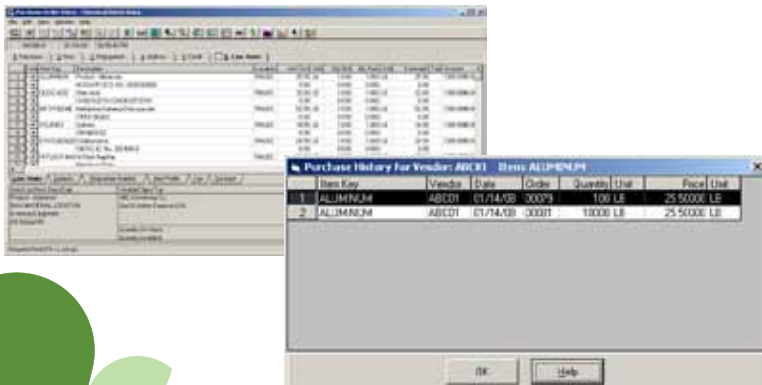
Efficiently manage your purchase order, shipping, and receiving information with complete tracking of open and historical data.

ACCURATE ORDER PROCESSING

Automate tedious, time-consuming purchasing tasks and take control of your purchasing process.

INSIGHTFUL REPORTS AND DRILL-DOWN CAPABILITIES

Up-to-the-minute information on vendors, purchasing, shipping and receiving provides the insight you need to operate with unprecedented efficiency and profitability.



Customization

Purchasing can be easily customized to your business processes for maximum functionality and efficiency, ensuring consistent system use and reducing training requirements. Unique customization templates enable you to remove, rename, require or prevent entry, and set minimum/maximum numeric ranges for any entry field. Additionally, you can hide screen tabs that are not required in your business and even create your own field-level help. These are just a few of the productivity-boosting possibilities that benefit your entire organization.

Multicurrency Capabilities

Take control of the global marketplace with robust multicurrency capabilities, including instant conversion of foreign currencies to home currency and vice versa and calculation of gains and losses accrued through currency exchange. Your organization can capitalize on lower, more stable rates by negotiating fixed rates with each of your vendors. Integration with the Multi-Currency Manager module empowers you to transcend many of the operational challenges of global enterprise.

Access to Business-Critical Information

Proactively communicate with your vendors to improve on-time deliveries, order accuracy, and your overall relationship. Notes and Attachment functionality provides quick and easy access to vendor correspondence, contracts, e-mail documents, and more. Further improve your responsiveness to inquiries utilizing instant access to the vital purchasing, inventory, and production information you need without ever leaving your purchasing screen. Just click to view approved vendors, lead times, price quotes, quantity breaks and contract prices, current inventory levels, purchasing history, and production usage over the previous 12 months.

Streamlined Integration

Purchasing Pro eliminates redundant entry efforts by automatically updating Inventory Pro with quantities and costs, Accounts Payable with voucher and payment information, Bank Book with check receipts, and the General Ledger with all transaction activity. Seamlessly add vendors, process vouchers, and view the whole picture concerning the status of an inventory item, including on-hand, committed-to sales, and committed-to-production quantities. With this fully integrated solution, you have access to current inventory and accounts payable records so that you can make insightful purchasing decisions and operate more efficiently.

Powerful Flexibility

Maintain tight control over your purchasing process, ensuring items arrive when needed, but not so early so that carrying costs add up while extra inventory sits on your shelves. Flexible processing options allow you to combine orders for a vendor by setting quantities, location, tax status, required date, ship date, requisition number, and account codes for each line item. In addition, you can easily add or remove items from a current purchase order and automatically track the order status throughout the entire process, which includes status designations of New, Printed, Posted, Adjusted, Canceled, and Fully Received. These and other streamlined reordering options, such as effectively drop shipping orders directly from a vendor to your customer, can save your company valuable time and money and help you meet required receipt dates.

Accurate Order Processing

Effectively prevent errors in shipping and billing by creating detailed purchase orders (POs) and maintaining a full audit trail. You can reduce repetitive data entry by utilizing default values from your vendor to create purchase orders quickly. Further automate purchasing using historical purchase orders as templates for new orders and optionally designate orders to recur at user-specified cycle dates. Sage PFW allows you to accrue and post received purchase orders, including lot-tracked POs. An accrued receipt is tracked by the PO number and the backorder level, so multiple accruals can occur against the same purchase order. Additional processing features include powerful data validation using visual red-flag alerts, automatic assignment of PO numbers using a flexible numbering convention, conversion of purchase units of measure and costs, and tracking of lot, bin, and SSCC details. Sage PFW has powerful capabilities that take the guesswork out of your order processing—ensuring confident business transactions.

Insightful Reports and Drill-down Utilities

Run a variety of industry-standard reports or create custom reports to uncover the valuable insights behind the numbers. Get critical information on purchase orders, requisitions, and expected deliveries, and track and report historical purchases and receipts. Further explore your data using Financial Explorer to perform comprehensive inquiries and drill downs from anywhere in the system. Various time-saving utilities, such as the Economic Order Quantity and Reorder Point Utility (EOQ/RPU), Lead Time Utility, and Vendor/Lead Time Utility allow you to make smarter, more proactive purchasing decisions.